

Instructions for Battery Management Update

This description refers to SofarSolar battery storage products:

GTX 2500

GTX 3000-H

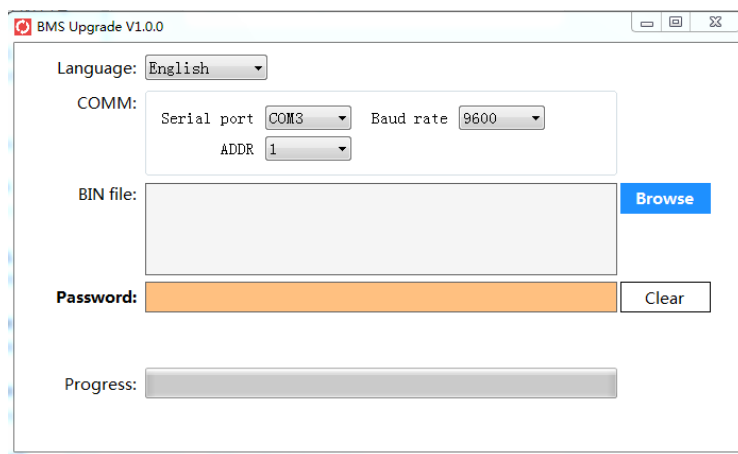
GTX 5000

In order to update the Battery Management System with this software, you need to connect the PC with the Battery, using a converter cable from RS232 to USB, which is provided by SofarSolar.

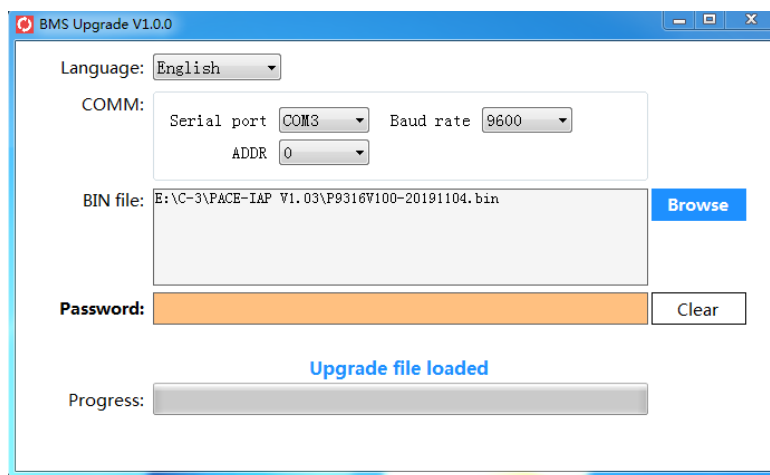
When upgrading, first make sure the BMS product is in standby state. Please turn off the electric load and charger.

Operation steps and instructions

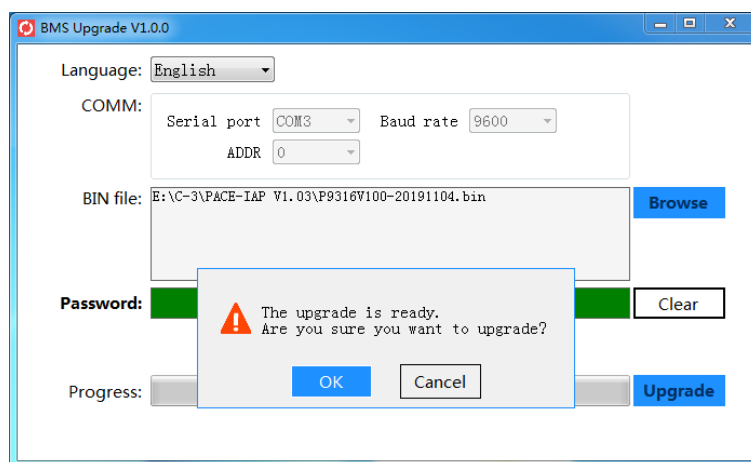
Step 1. Double click the application icon (BMS Upgrade V1.0.5.exe), Open the upgrade tool. The specific interface is as follows:



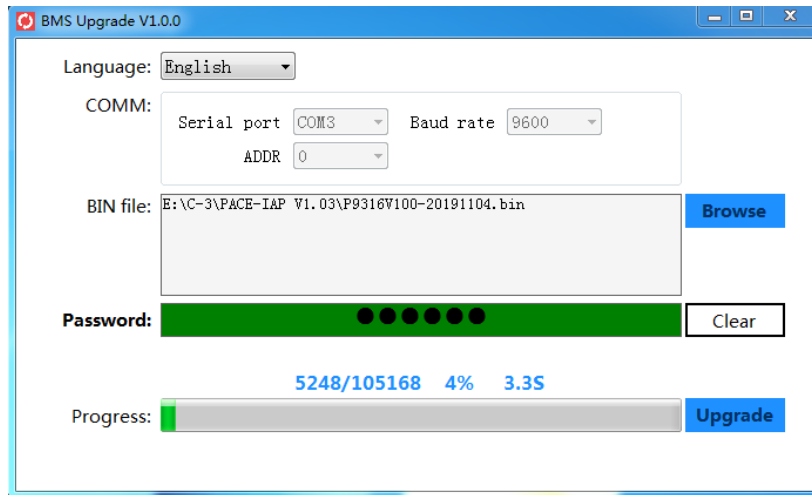
Step 2. Select the correct serial port and baud rate, click "Browse" to select the corresponding bin file. After importing the bin file, select the correct address. If you are prompted that the bin file is wrong, please confirm whether the bin file selection is correct, or contact SofarSolar to obtain the correct bin file.



Step 3. Enter the correct password (password 541800). Click the "Upgrade" button to upgrade. After opening the upgrade tool, the first upgrade will prompt "The upgrade is ready. Are you sure you want to upgrade?", click "OK" to continue the upgrade, and there will be no prompt after that; click "Cancel" to exit the upgrade.



Click "OK" to enter the normal upgrade process. Please make sure the upgrade is completed.



Error handling

1. if the bin file is wrong, please confirm whether the bin file selection is correct or contact the provider to obtain the correct bin file.
2. prompt response timeout, please check whether the communication line is connected well or whether the contact is good.
3. in case of any failure in the upgrade process, the upgrade must be repeated until it is successful. If the upgrade has not been successful, please contact our technical department.